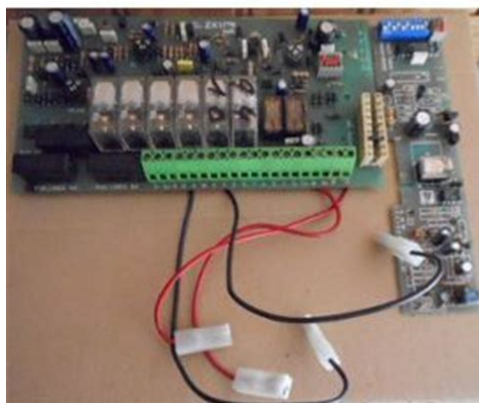


Came zk1 manual



File Name: Came zk1 manual.pdf

Size: 2937 KB

Type: PDF, ePub, eBook

Category: Book

Uploaded: 17 May 2019, 15:20 PM

Rating: 4.6/5 from 780 votes.

Download Now!

Please check the box below to proceed.



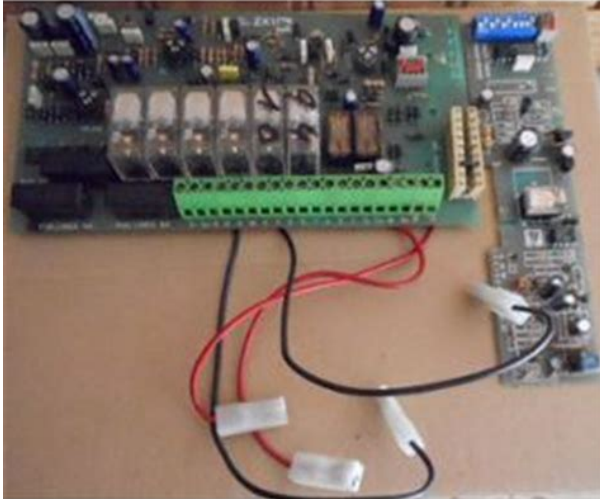
I'm not a robot



reCAPTCHA
Privacy - Terms

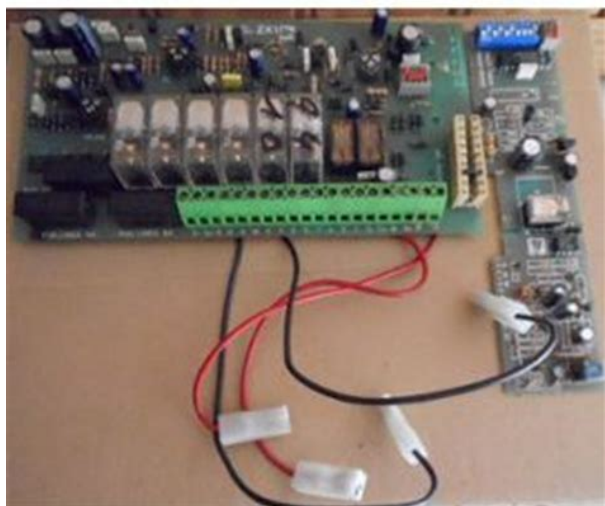
Book Descriptions:

Came zk1 manual



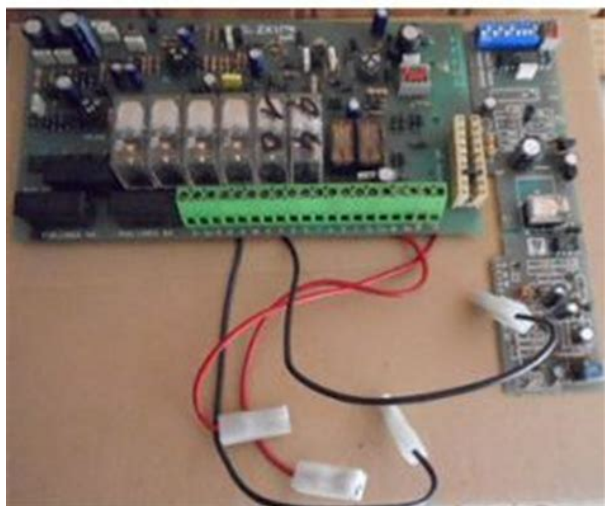
Lastmanuals provides you a fast and easy access to the user manual CAME ZK1. We hope that this CAME ZK1 user guide will be useful to you. In order to ensure long life to your appliance, and prolong the lifetime of the antiscald cartridge, we advise you to mix tap and demineralised water. Remove the water reservoir from its housing by pulling it towards you. The appliance will not deliver any steam if the antiscald cartridge is not inserted in the water tank. Relling with water whilst ironing. You can refill the reservoir during ironing. You do not need to unplug the appliance, and can immediately recommence ironing. Thermostat adjustment. Sort out the clothes according to the ironing temperature required for each item. Start ironing the pieces requiring the lowest temperature, gradually going to those requiring the highest temperature. the appliance is used for the first time the water tank is empty the antiscald cartridge has just been changed. Vertical ironing. Your iron can also be used vertically to steam clothes on hangers or curtains in situ etc. For best results, the material to be steamed should be taut. Auto stop Electronic safety system. Wichtig. An audible signal indicates that the appliance is ready to supply steam again. For an easy and safe transportation, the handle of your ironing basket has a safety lock. When the handle is set vertically, if the appliance is slightly lifted up, the locking system of the handle is automatically engaged. To release the handle, slightly press the handle downwards to the ironing position. Storage. In any way cant Lastmanuals be held responsible if the document you are looking for is not available, incomplete, in a different language than yours, or if the model or language do not match the description. Lastmanuals, for instance, does not offer a translation service. Intelligent Security and Fire provide user manuals for Access Control, Automatic Gates, CCTV Systems, Door Entry, Fire Alarms, Intruder Alarms.<http://zavala.com.br/UserFiles/dimplex-stockbridge-manual.xml>

- **came zk1 manual, 1.0.**



Reload to refresh your session. Reload to refresh your session. To learn more about installation, please visit our knowledge base, where you can find more details about what you need and how to setup Nold Open. Click here to search for a pdf manual for this opener. Please keep in mind that the order of the wires doesn't matter, every input and output is polarity free. With the gate closed, attach the fixing plate with the front bracket to the gate wing. The anchor plate must be horizontally aligned with the rear bracket and measurement of 680 mm must be observed. Install the gear motor on the two brackets. N.B use neutral grease to lubricate the wormgear and the washer at the moment of installation. All data checked with the maximum care. However, no liability is accepted for any error or omission. Registrieren Sie sich jetzt. Page 1. Monday, February 21, 2005 Manuel d'utilisation. Emetteurrecepteur numeriqueConcu pour les chaines DVD cinema maison de PanasonicDear customer. Cher client. Thank you for purchasing this product. For optimum performance and safety, Nous vous remercions d'avoir arrete votre choix sur cet appareil. Pour en tirer un rendement optimal, lire attentivement le present manuel. Before connecting, operating or adjusting this product, please read thePlease keep this manual for future reference. Avant de raccorder, regler ou utiliser l'appareil, il est recommande deConserver ce manuel. Company, Division of Panasonic. Corporation of North America. One Panasonic Way Secaucus. New Jersey 07094Panasonic Canada Inc. Ave. 65 de Infanteria, Km. 9.5. San Gabriel Industrial Park, Carolina. Puerto Rico 00985Mississauga, OntarioPrinted in Malaysia. Imprime en Malaisie. C 2005 Matsushita Electric Industrial Co., Ltd. Accessory. Accessoire. Please check and identify the supplied accessory. Use number indicated in parenthesesFor U.S.A. To order accessory, refer to "Accessory Purchases" on page

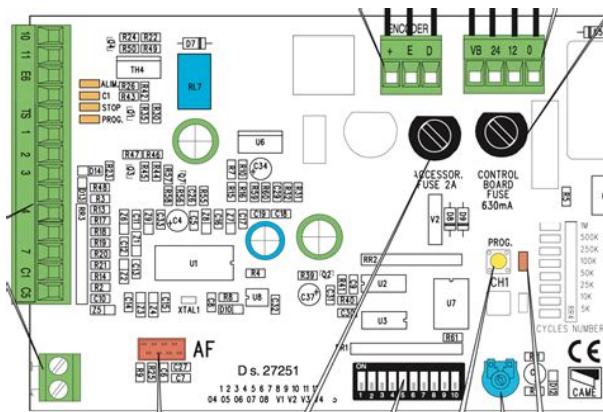
6. <http://www.alcantaracosmetica.com/images/editor/dimplex-storage-heaters-user-manual.xml>



For Canada To order accessory, call the dealer from whom you made your Verifier l'accessoire en le
 cochant. Lors de la commande de pieces de rechange, utiliser Pour la commande d'accessoires,
 contacter le magasin ou l'appareil a ete achete. User memo. The model number and serial number
 of Please note Before requesting service, make the following checks. If you are in doubt about some
 of Ecran d'affichage sur la chaine cinema maison. Display on your home theater system Turn the unit
 off and on again. If the problem persists, contact all est recommande de noter, dans Troubleshooting
 guide S'assurer que le recepteur est sous tension. Mettre l'appareil hors Si le probleme n'est
 pas Recepteur numerique. Digital receiver. Wireless link Le voyant de Page 2. Monday, February 21,
 2005 Le symbole de l'eclair dans un triangle equilateral indique la The exclamation point within an
 equilateral triangle is Le point d'exclamation dans un triangle equilateral indique que Conserver le
 present Read these instructions. Keep these instructions. Heed all warnings. Follow all instructions.
 Do not use this apparatus near water. Clean only with dry cloth. Do not block any ventilation
 openings. Install in accordance with the manufacturer's Do not install near any heat sources such as
 radiators, heat registers, stoves, or Do not defeat the safety purpose of the polarized or
 grounding type plug. AA grounding type plug The wide blade or the third prong are If the provided
 plug does not fit into your outlet, consult an Protect the power cord from being walked on or pinched
 particularly at plugs, Use only with the cart, stand, tripod, bracket, or table specified by When a cart
 is Unplug this apparatus during lightning storms or when unused Refer all servicing to qualified
 service personnel. Servicing is required when the Conserver ces instructions. Lire toutes les mises en
 garde. Suivre toutes les instructions. Ne pas utiliser cet appareil pres d'une source d'eau. Nettoyer
 qu'avec un chiffon sec.

Ne pas bloquer les events d'aeration. Installer l'appareil selon les instructions du Ne pas installer
 l'appareil pres d'un appareil de chauffage tel qu'un radiateur, une Pour des raisons de securite, ne
 pas modifier la fiche polarisee ou celle de mise a Si ce genre S'assurer que le cordon est place dans
 un endroit ou il ne risque pas d'etre ecrase, N'utiliser que les accessoires ou peripheriques
 recommandes par le fabricant. N'utiliser l'appareil qu'avec un chariot, meuble, trepied, support Lors
 de l'utilisation d'un chariot, le deplacer avec le plus grand Debrancher cet appareil lors d'un orage
 ou en cas de nonutilisation prolongee. Confier l'appareil a un technicien qualifie pour toute
 reparation Page 3. Tuesday, February 22, 2005 S'assurer que la prise secteur est situee pres de
 l'appareil dans un endroit facile Although the AC power switch is in the "OFF" position, the unit is
 not completely Remove the plug from the main electrical outlet if you Place the unit so the plug
 can Meme si l'interrupteur est a la position "OFF", l'appareil n'est pas entierement Debrancher la
 fiche de la prise secteur si Placer l'appareil de These limits are designed to provide reasonable
 protection against harmful This equipment generates, uses and can However, there This device

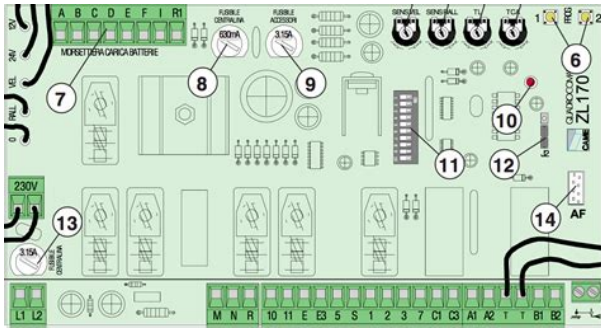
complies with RSS210 of the IC Rules. Operation is subject to the Cet appareil est conforme a la RSS210 du reglement de la IC. Le fonctionnement estAny unauthorized changes or modifications to this equipment would void the user'sThis device complies with Part 15 of the FCC Rules. Operation is subject to theTo ensure compliance, operations atThe antenna used for this transmitterOperation is subject to theProduct service. Service apresventeRefer all other servicing to authorized servicing personnel.L'utilisation de pieces de rechange non autorisees peut causer un incendie, desThe servicer will require all components to service your system. Therefore, should service ever be necessary, be sure to bring the entire system.



<https://www.interactivelearnings.com/forum/selenium-using-c/topic/13770/3m-thermofax-manual>

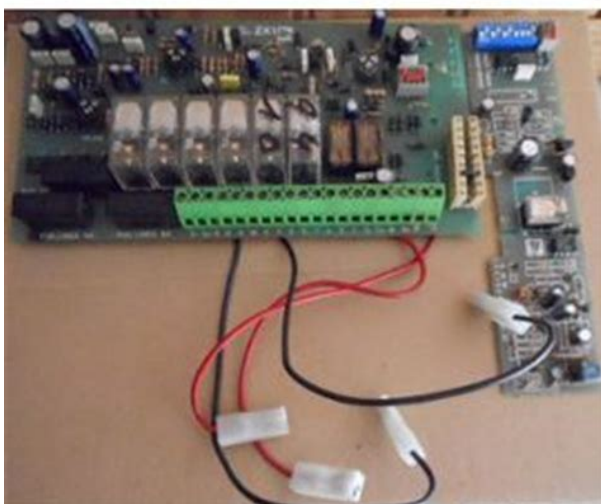
Pour toute réparation ou révision, apporter tous les éléments de la chaîne. Product information. Demande d'informations. For product information or assistance with product operation. Pour toutes réparations, renseignements ou conseils sur le fonctionnementIn the U.S.A., refer to "Customer Services Directory" on page 6. In Canada, contact the Panasonic Canada Inc. Customer Care Centre atVeillez contacter le service à la clientèle de Panasonic Canada Inc. auMaintenance. Entretien. Clean this unit with a soft, dry cloth.Pour nettoyer l'appareil, utiliser un chiffon doux et sec.Page 4. Monday, February 21, 2005PreparationConnecting the digital transmitterInsert the digital transmitter into the slot. Digital transmitter. Insert fully until youDo not insert orRear of your home theater system. Digital receiver. Connecting the surround speaker cablesHome theater main unit. If the surround speaker cables have already been connected. Surround speakerDisconnect the surround speaker cables fromConnect the surround speaker cables to theInsert the cable into theColor of the cablesSurroundClick! AC powerTo household AC outlet AC 120 V, 60 Hz. SpecificationsWireless module. Frequency range. No. of channels. Power on your home theater system. RF output power. RF output impedance. Power on the receiver.Troubleshooting guideData rateRMS output power. Surround ChFTC output power. Surround Ch. Wireless link indicator. This indicator lights when the signal strength isThis indicator lights when the unit is turned on. Dimensions WtHtD. Digital transmitter. Digital receiver. Mass. Digital transmitter. Digital receiver. Operating temperature range. Operating humidity range. Power supply. Power consumption. AC 120 V, 60 Hz. Digital transmitterPress!Mass and dimensions are approximate.Start play on your home theater system.Page 5. Monday, February 21, 2005PreparatifsConnexion de l'émetteur numérique. Exemple. Introduire l'émetteur numérique dans la fente. Émetteur numérique.

<https://esppbc.com/images/briggs-u0026-stratton-quantum-service-manual.pdf>



Introduire a fondNe pas inserer ouPanneau arriere de la chaineRecepteur numerique. Connexion des cables d'enceinteAppareil principal de laSi les cables d'enceinte ambiophonique ont deja ete connectes. Connecter les cables au recepteur. Cables d'enceinteDeconnecter les cables d'enceinte ambiophoniqueCouleur des cablesCable d'enceinteDeclic! CordonVers une prise de courant secteur 120 V c.a., 60 Hz. SpecificationsModule sans fil. Plage de frequences. Nombre de canaux. Etablir le contact sur la chaine cinema maison. Etablir le contactGuide de depannagePuissance de sortie RF. Impedance de sortie RFDebit des donneesPuissance de sortie efficace. Canal ambiophonique. Puissance de sortie FTC. Canal ambiophonique. Voyant de liaison sans fil. Ce voyant s'allume lorsque la puissance duConsommationEmetteur numeriqueEmetteur numeriqueRecepteur numeriquePoids. Emetteur numeriqueRecepteur numeriqueTemperature de fonctionnementHygrometrie. Humidite relative de 5 % a 90 % sans condensation. Voyant d'alimentation. Ce voyant s'allume lorsque l'appareil est enInterrupteurLe poids et les dimensions sont approximatifs.Appuyer! Lancer la lecture sur la chaine cinema maison.Page 6. Monday, February 21, 2005Panasonic Consumer Electronics Company. Division of Panasonic Corporation of North America. One Panasonic Way Secaucus, New Jersey 07094. Panasonic Puerto Rico, Inc. Ave. 65 de Infanteria, Km. 9.5. San Gabriel Industrial Park, Carolina, Puerto Rico 00985. Panasonic Audio Products Limited Warranty. Limited Warranty Coverage. If your product does not work properly because of a defect in materials or workmanship. Panasonic Consumer Electronics Company or Panasonic Puerto Rico, Inc. collectivelyThe decision to repair orProduct or Part Name. Parts. Labor. Audio Products except items listed below. One 1 year. One 1 year. USB ReaderWriter, Personal Computer Card. AdaptersOne 1 year. Not Applicable. Accessories Headphones, Cartridges, Microphones.

<http://essentialchef.com/images/briggs-u0026-stratton-mower-engine-manual.pdf>



AdaptersSD Memory Cards, Rechargeable Battery Packs inNinety 90Ninety 90Ten 10 days. Not Applicable. Ninety 90Not Applicable. CarryIn or MailIn Service. For CarryIn or MailIn Service in the United States call 1800211PANA 18002117262 or visit. Panasonic web site. For assistance in Puerto Rico call Panasonic Puerto Rico, Inc. 7877504300 or faxThis warranty ONLY COVERS failures due to defects in materials or workmanship, and DOES NOT. COVER normal wear and tear or cosmetic damage. The warranty ALSO DOES NOT COVER damagesServicenter or other Authorized Servicer, or damage that is attributable to acts of God.The items listed are not exclusive, butThis warranty gives you specific legal rights and you may also have other rights which vary from state toIf the problem is not handled to your satisfaction, then write to the warrantor's. Consumer Affairs Department at the addresses listed for the warrantor. During the "Labor" warranty period there will be no charge for labor. During the "Parts" warranty period,You must carryin or mailin your product during the warranty period. IfThis warranty only applies to productsThis warranty is extended only to theA purchase receipt or other proof of theObtain Product Information and Operating Assistance; locate your nearest Dealer or Servicenter; purchase Parts and. Accessories; or make Customer Service and Literature requests by visiting our Web Site atFor hearing or speech impaired TTY users, TTY 18778338855. Accessory Purchases. Purchase Parts, Accessories and Instruction Books online for all Panasonic Products by visiting our Web Site atYou may also contact us directly at. Panasonic Services CompanyFor hearing or speech impaired TTY users, TTY 18666051277. Service in Puerto Rico. Panasonic Puerto Rico, Inc. Ave. 65 de Infanteria, Km. 9.5, San Gabriel Industrial Park, Carolina, Puerto Rico 00985. Phone 7877504300, Fax 7877682910PDF Version 1.4. Linearized No. Create Date 20050221 104553Z. Creator PScript5.dll Version 5.2. Page Count 6.

Creation Date 20050221 104553Z. Producer Acrobat Distiller 5.0.5 Windows. Title FX50PP.book.

<http://www.holzbau-hoelzl.at/wp-content/plugins/formcraft/file-upload/server/content/files/1626fb4af6a4de---bose-digital-controller-manual.pdf>

BACSIHA.COM/public/ckfinder/userfiles/files/boxlight-cd-600m-manual.pdf

<http://superbia.lgbt/flotaganis/1647903108>